

## LS220DE

The LinkStation™ LS220DE is an enclosure model of 2 bay Network Attached Storage combines an incredibly easy User Interface with the convenience and security. The LS220DE could link and manage data stored on computers, smartphones, tablets, and other devices. Easy to set up and packed with convenient features for transferring files, streaming content, adding disks, backing up and protecting data and more.



### More storage plus WebAccess for remote access

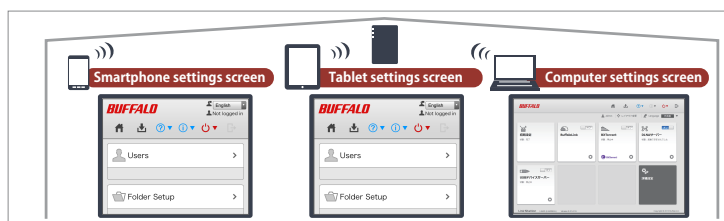
The LS220DE diskless enclosure model allows users to construct RAID arrays using drives with their preferred storage capacities. With newer model smartphones and tablets featuring higher resolution cameras, these files can quickly fill up a mobile device's storage. Downloading WebAccess to the portable device makes it easy to transfer, save, and access files not only on the drive and home network, but also over the mobile network. The LS220DE works as a remote external HDD that can be accessed from anywhere, freeing up storage on mobile devices and increasing smartphone and tablet capacity.



### Uses special Web settings screen for smartphones and tablets

Using the special Web settings screen for smartphones and tablets, you can easily manage your LinkStation, even without a computer. Of course, you can also access the LinkStation from computers easily with the simply designed interface.

\* Supported OSs for smartphone user interfaces: iOS 5 or above, Android 2.3 or above



### Interoperability with multiple devices

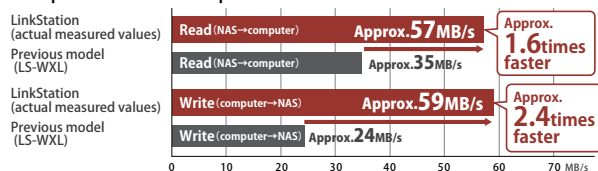
In addition to the WebAccess app, the LinkStation can connect with DLNA-supported TVs and consoles to search and play movies stored on the NAS. Use the Twonky Beam app to forward movies to TVs and big screens supporting DLNA (DMR). Files are accessed just like they are on a computer. BitTorrent, which speeds transfers by distributing large amounts of data over the Internet, can be used anywhere, anytime, and doesn't even require a computer by using "BitTorrent Remote" Android app. USB projectors, displays, and other USB devices easily just connect them and they are ready to use through the network.



### Easy, rapid transfers reduce time in copying

These LinkStations use the latest generation CPUs to achieve maximum transfer speeds of up to 57 MB/s\*1 and improve processing power. With transfer speeds beyond the 35 MB/s of the previous LinkStation model (LS-WXL), you can comfortably transfer Hi-Vision video and files with large amounts of data in much less time. Writing speeds of up to 59 MB/s are also faster than the 24 MB/s of previous LinkStations (LS-WXL).

#### Comparison of transfer speeds



\*1 <Test Environment> [PC] Motherboard: Intel DH77KC/CPU: Intel Core i3-2100/NIC: Intel Gigabit CT Desktop/Memory: 2 GB/OS: Windows 7 Professional 32bit Service Pack1 [NAS] LS220D0202

<Measurement Method> The NAS was connected to the computer via a LAN, with sequential writes and reads measured using benchmark software (CrystalDiskMark 3.0.2).

(Testing conducted by BUFFALO in March 2014)

### Reassurance and reliability

To add capacity, simply connect an external drive. External disks for backing up the LinkStation can be used just as easily. And the LinkStation supports the RAID 1 (mirroring) to automatically duplicate and protect your data if a disk should ever fail. And all LinkStation features are guaranteed to work.

## Features

- Huge storage, up to 8 TB, diskless enclosure model
- Latest processors for ultra-high data transfer speeds
- Remote control from smart devices, including media content (Android/iOS) and BitTorrent (Android)
- Simple WebUI interface and apps
- Supports multiple formats, no reformatting required for external HDDs and SDXC flash memory
- Plug & Play USB connectivity, no drivers or settings needed
- Support both 3.5" and 2.5" HDD formfactors
- Print Server

# LS220DE

## Specifications

### Internal Hard Drives

Number of Drives	2
Drive Interface	SATA II
Supported RAID Levels	0, 1, JBOD (Normal)
Drive Capacity	LS220DEEnclosure

### LAN Interface

Standard Compliance	IEEE802.3/3u/3ab
Speed and Flow Control	10/100/1000 Mbps (Auto Sensing)
Number of Ports	1 x RJ-45 (Auto MDIX)

### USB Interface

Standard Compliance	USB 2.0			
Connector Type	A type			
Number of Ports	1			
Feature	Hard Drive	✓	UPS	✓
	Direct Copy	✓	Speaker	-
	Print Server	✓		

### Key Feature

DLNA Server	✓	Time Machine	✓
WebAccess	✓	iTunes Server	✓
BitTorrent Client	✓	Enagy Save	✓
Web Server	-	FTP Server	✓
MySQL	-	Active Directory Support	✓
PHP	-	Smartphone Application	✓

### Protocol Support

Networking	TCP/IP
File Sharing	CIFS/SMB, AFP, HTTP/HTTPS, FTP/SFTP
Management	HTTP/HTTPS
Time Synchronization	NTP

### Others

Client OS Support	Windows® 8.1/8 (32/64-bit), 7 (32/64-bit), Vista® (32/64-bit), XP Mac OS® X 10.9, 10.8, 10.7, 10.6
Power Consumption	22W (Average), 48W (MAX)
Dimensions (LxWxH, mm)	128 x 87 x 205
Weight	0.87 kg
Operating Environment	5-35°C, 20-80% (non-condensing)
Power Supply	AC 100-240V, 50/60Hz
Warranty	3-year

### Package Contents

LinkStation LS220DE  
Set up CD-ROM  
LAN cable  
AC power  
Quick Setup Guide  
Warranty Statement

### About BUFFALO

[www.buffalo-asia.com](http://www.buffalo-asia.com)

BUFFALO Inc., based in Nagoya, Japan, is a leading global provider of award-winning networking, storage and multi-media solutions for the home and small business environments as well as for system builders and integrators. With three decades of networking and computer peripheral experience, BUFFALO has proven its commitment to delivering innovative, best-of-breed solutions that have put the company at the forefront of infrastructure technology.